

Designing with Nature

prototyping for a biodesign maker space in the Nature Lab

Wynn Geary & Nick Burger

Patterns of Biophillic Design

Presence of water

Dynamic and diffuse light

Connection with natural Systems

Biomorphic Forms & Patterns

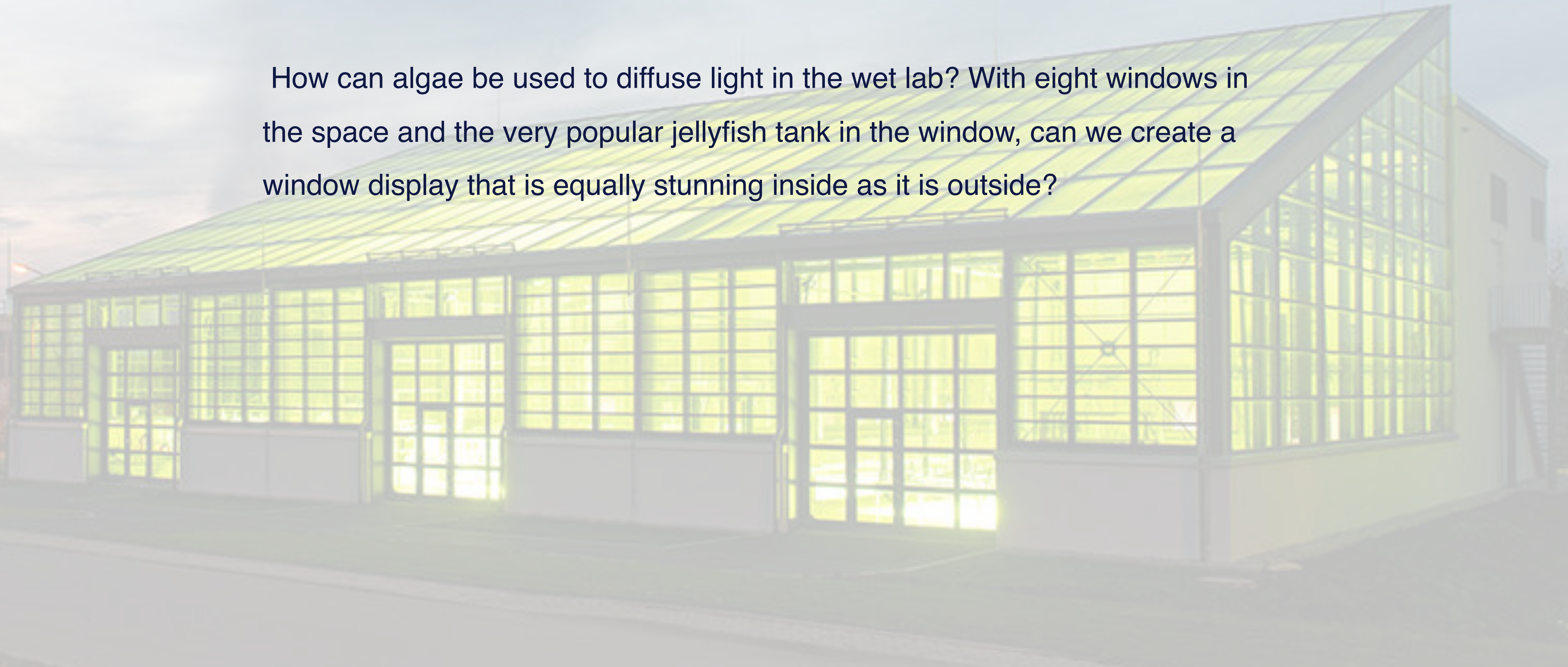
Presence of Water



With the wet lab already filled with tanks, our modifications to the space serve to heighten the existing infrastructure. We're proposing a comprehensive rainwater collection system that would supplement the room's existing water use.

Dynamic and Diffuse Light

How can algae be used to diffuse light in the wet lab? With eight windows in the space and the very popular jellyfish tank in the window, can we create a window display that is equally stunning inside as it is outside?



Connection to Natural Systems

What natural systems already exist in and around the space? How can we bring these systems front and center?

WQI: 85

WQI: 92

WQI: 94

Biomorphic Forms and Patterns

Let's talk tables...

Table Inspiration: Stromatolite Colony



Original Concept

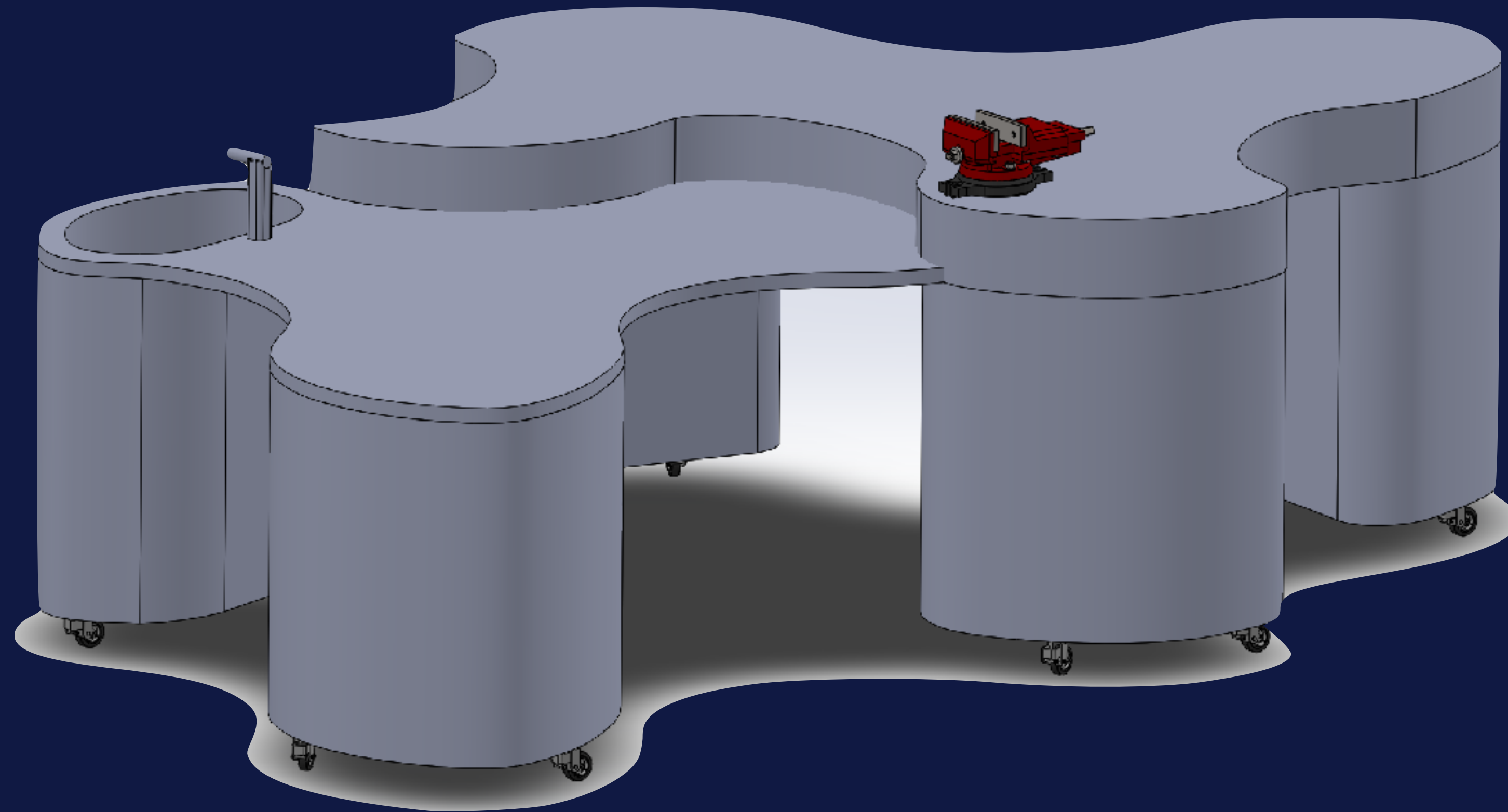






Table Features

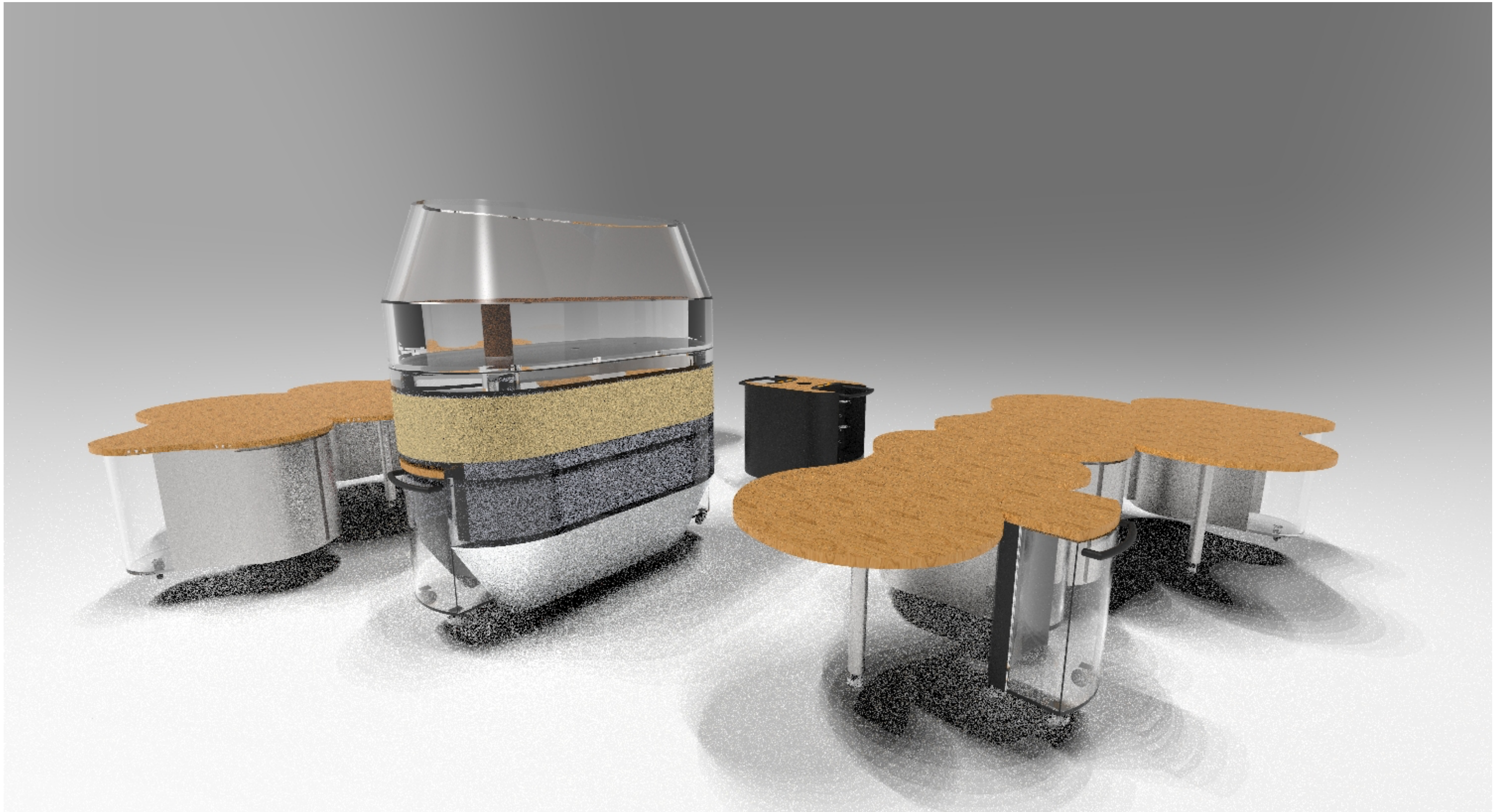
Removable water bucket

36 inch height

points to connect to other tables

internal piping system for drainage

hydraulic casters for easy mobility
and quick collaboration



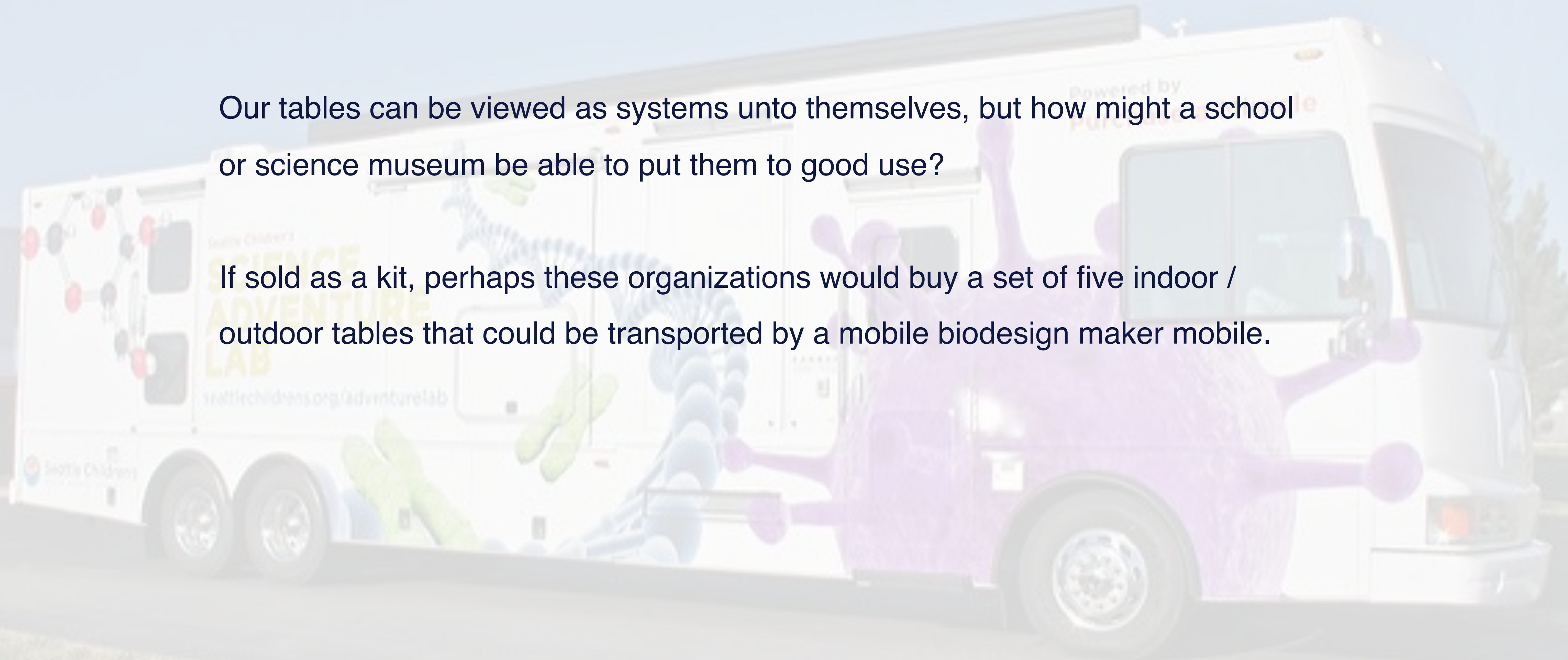




Fitting Into a System

Our tables can be viewed as systems unto themselves, but how might a school or science museum be able to put them to good use?

If sold as a kit, perhaps these organizations would buy a set of five indoor / outdoor tables that could be transported by a mobile biodesign maker mobile.



The Space as a Whole

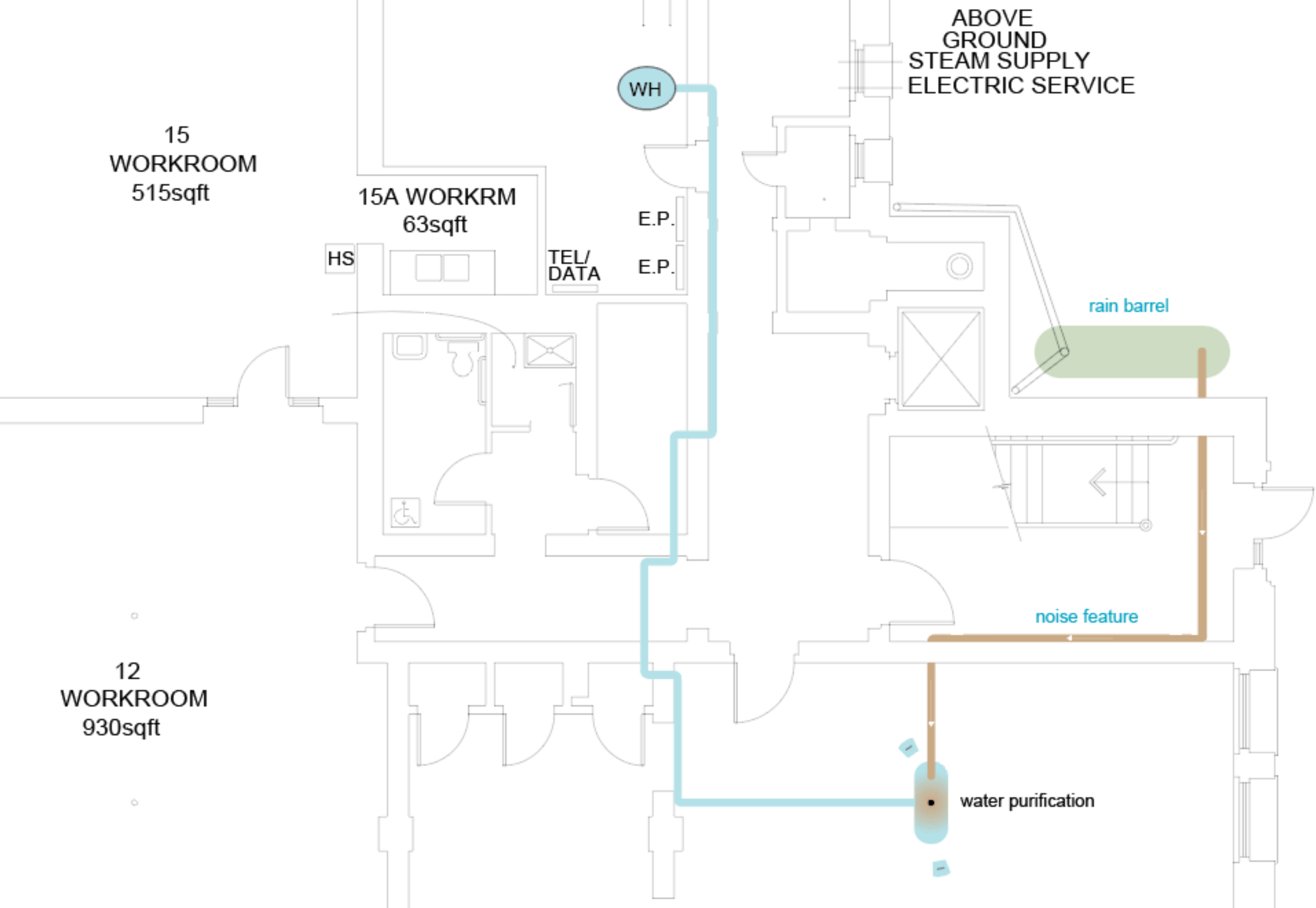


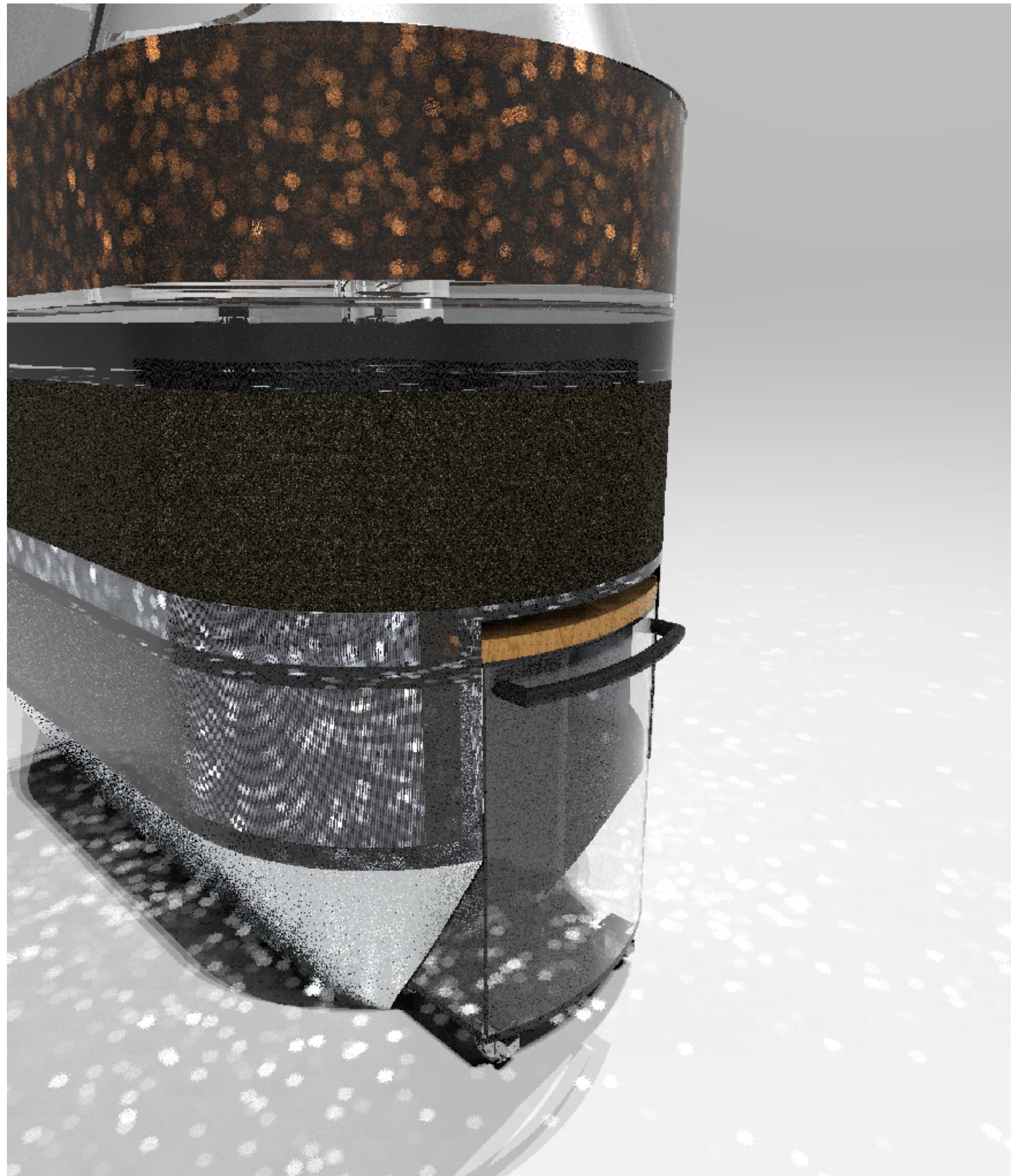




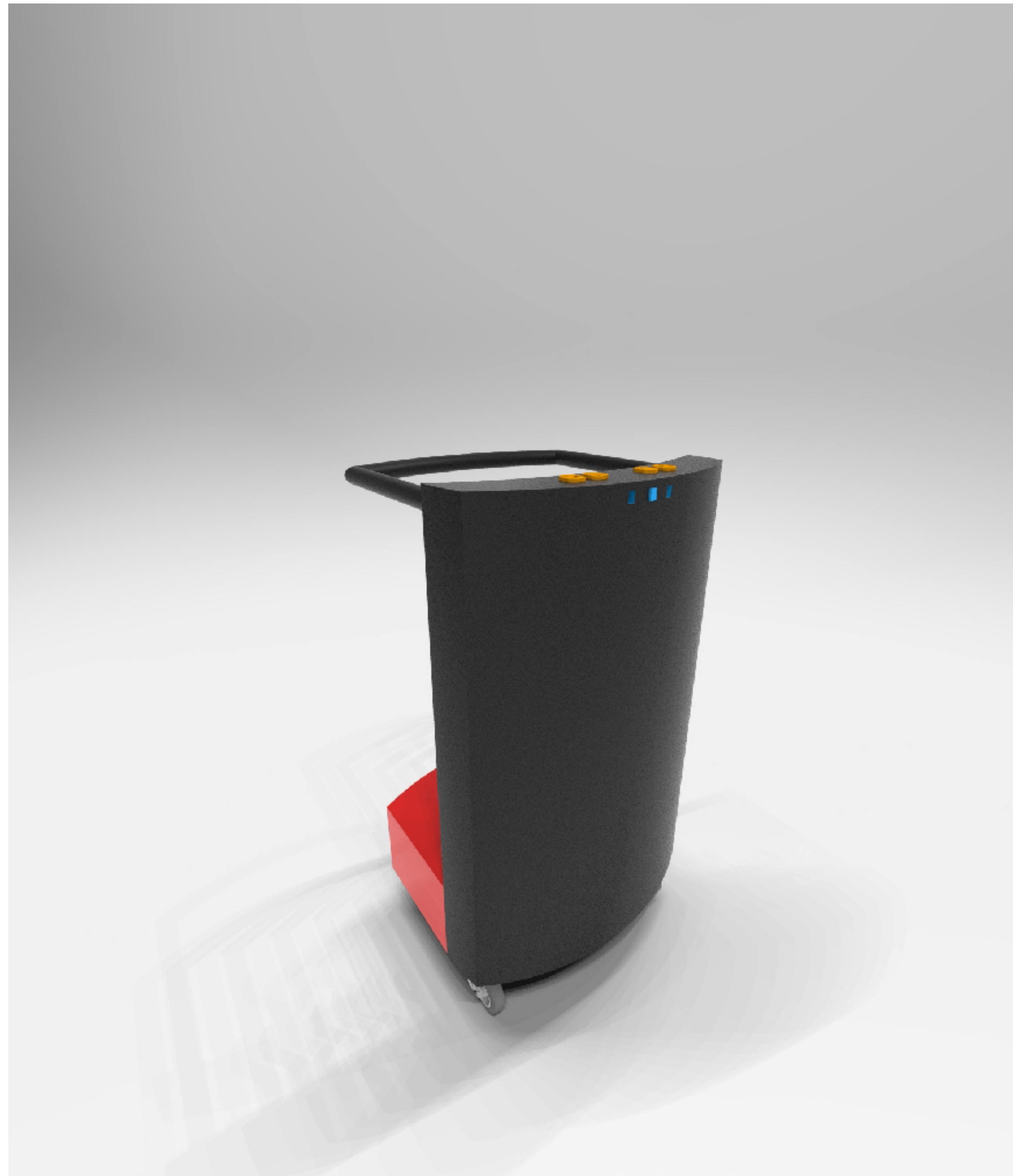


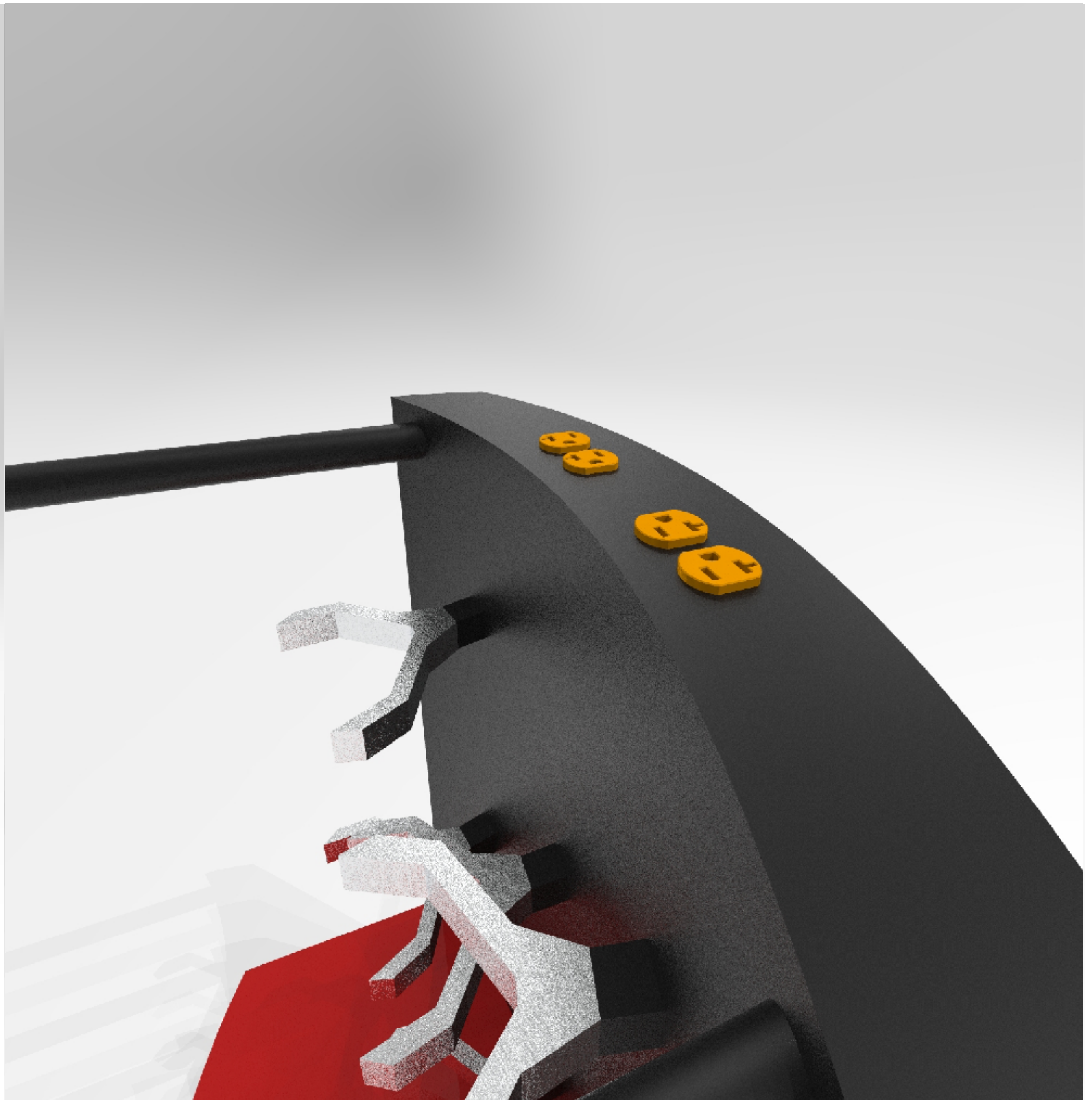












A woman with long brown hair, wearing a grey lab coat, is leaning over a large, rectangular glass fish tank. She is holding a small object, possibly a pipette or a small container, and appears to be working with the water or fish inside. The tank is filled with water and contains several fish of various colors, including yellow and black ones. The background shows a laboratory setting with wooden floors, white walls, and large windows. There are other people in the background, some working at tables. The overall scene is brightly lit, suggesting a well-lit laboratory environment. The text "Thank You" is overlaid in the center of the image in a bold, dark blue font.

Thank You