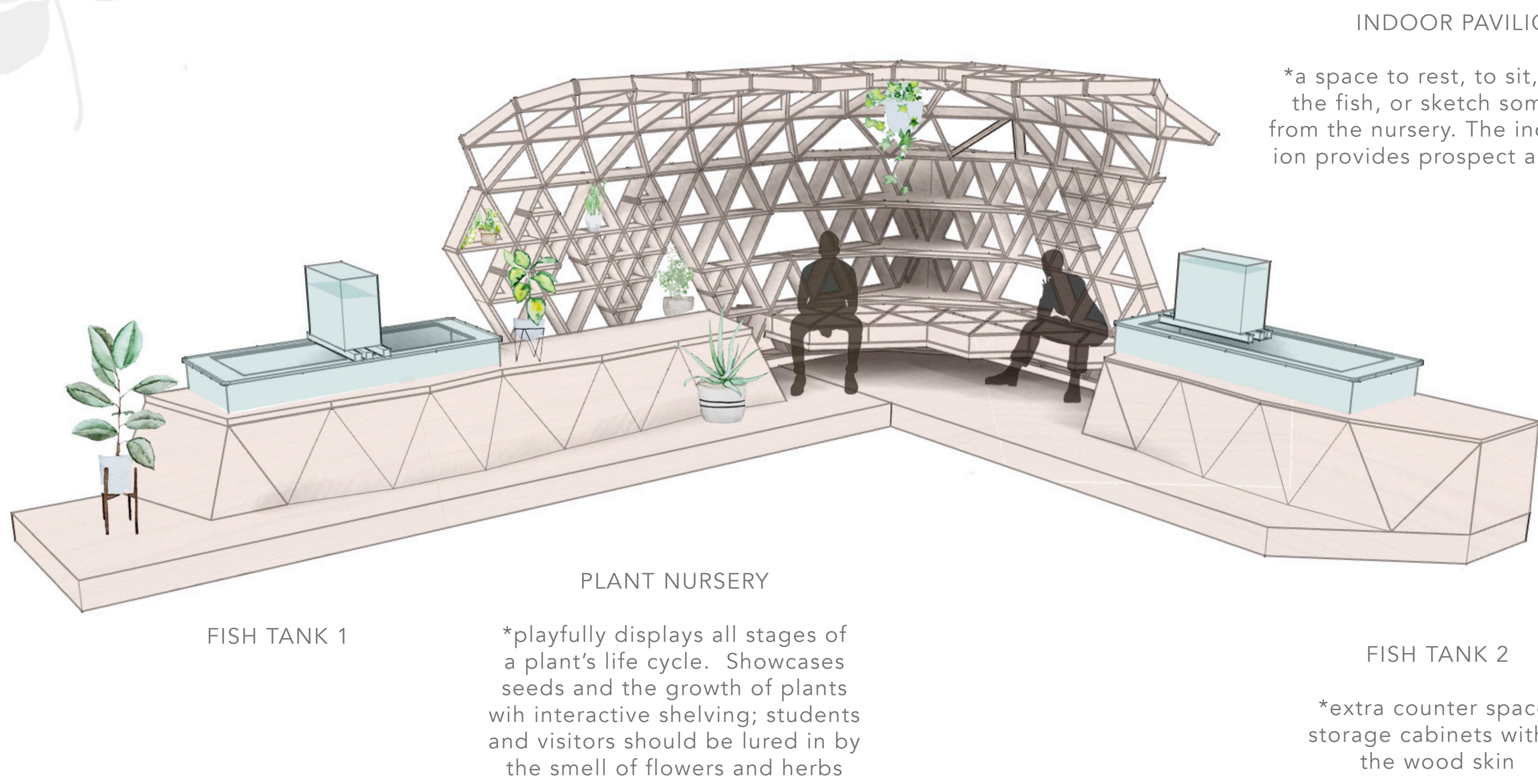




1. nature corner



INDOOR PAVILION

*a space to rest, to sit, to watch the fish, or sketch some plants from the nursery. The indoor pavilion provides prospect and refuge.

PLANT NURSERY

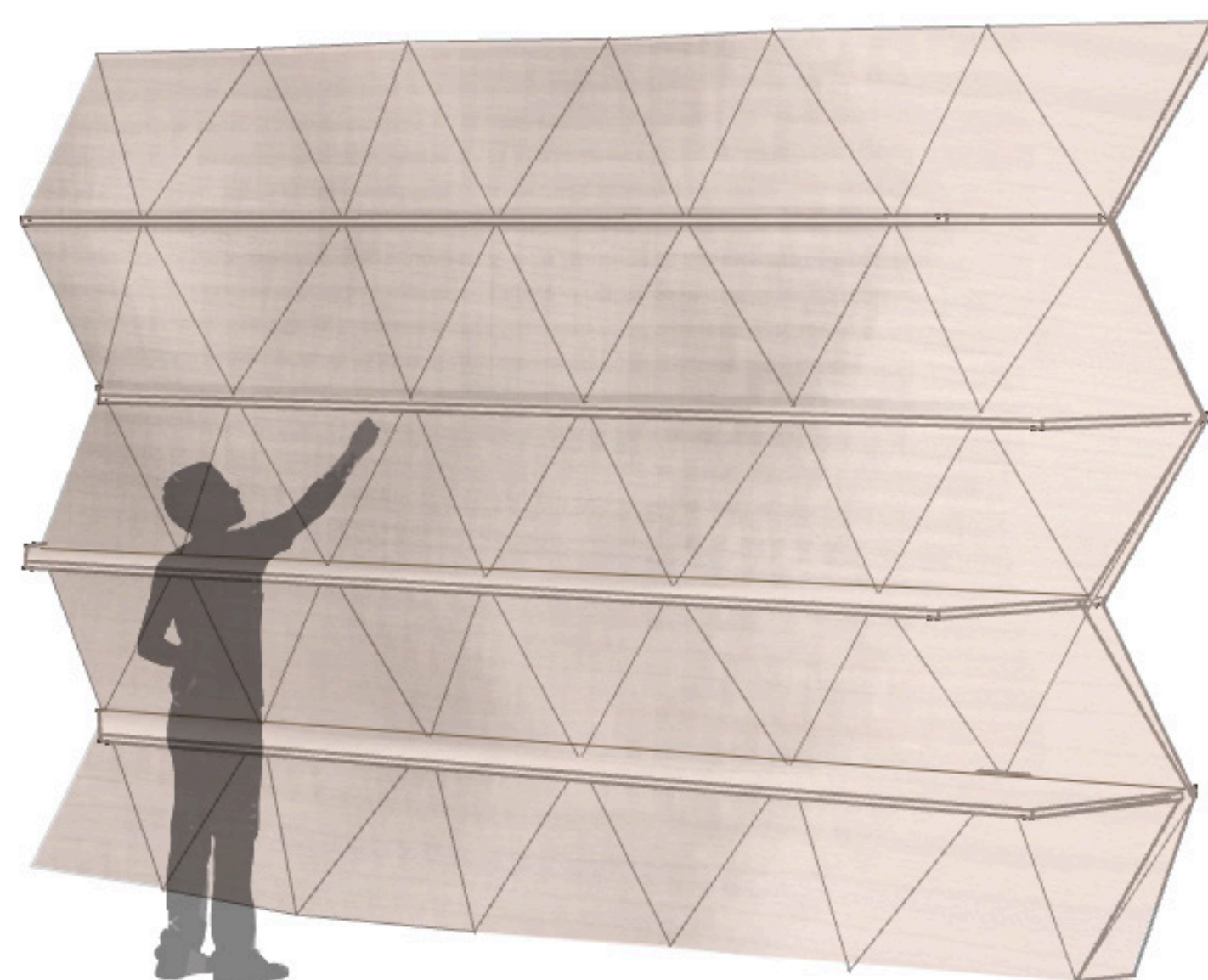
*playfully displays all stages of a plant's life cycle. Showcases seeds and the growth of plants with interactive shelving; students and visitors should be lured in by the smell of flowers and herbs

FISH TANK 1

FISH TANK 2

*extra counter space; storage cabinets within the wood skin

2. wooden skin



SHELVING & DISPLAY

*large shelf for showcasing and storage of student works

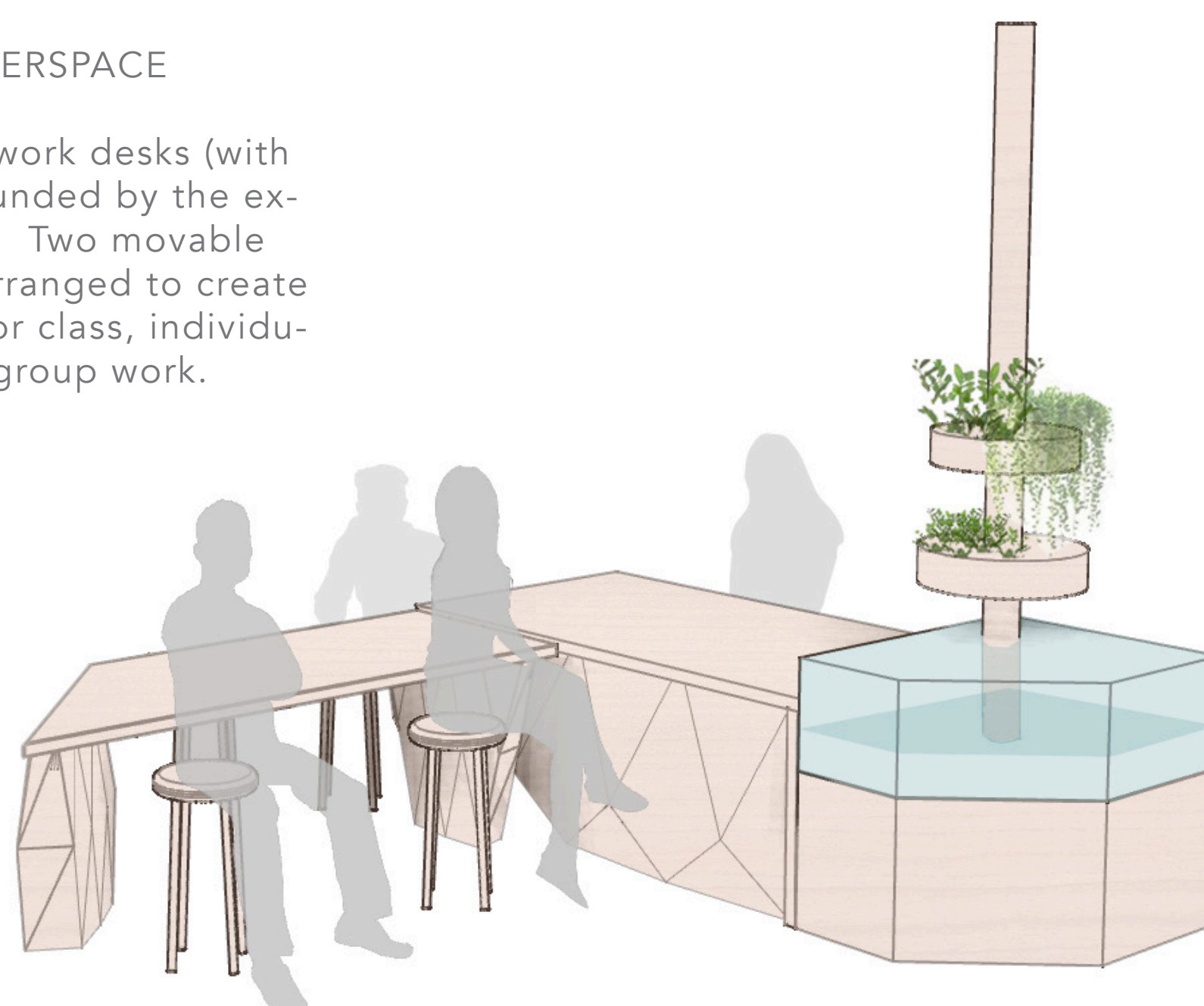
2. a biomakerspace

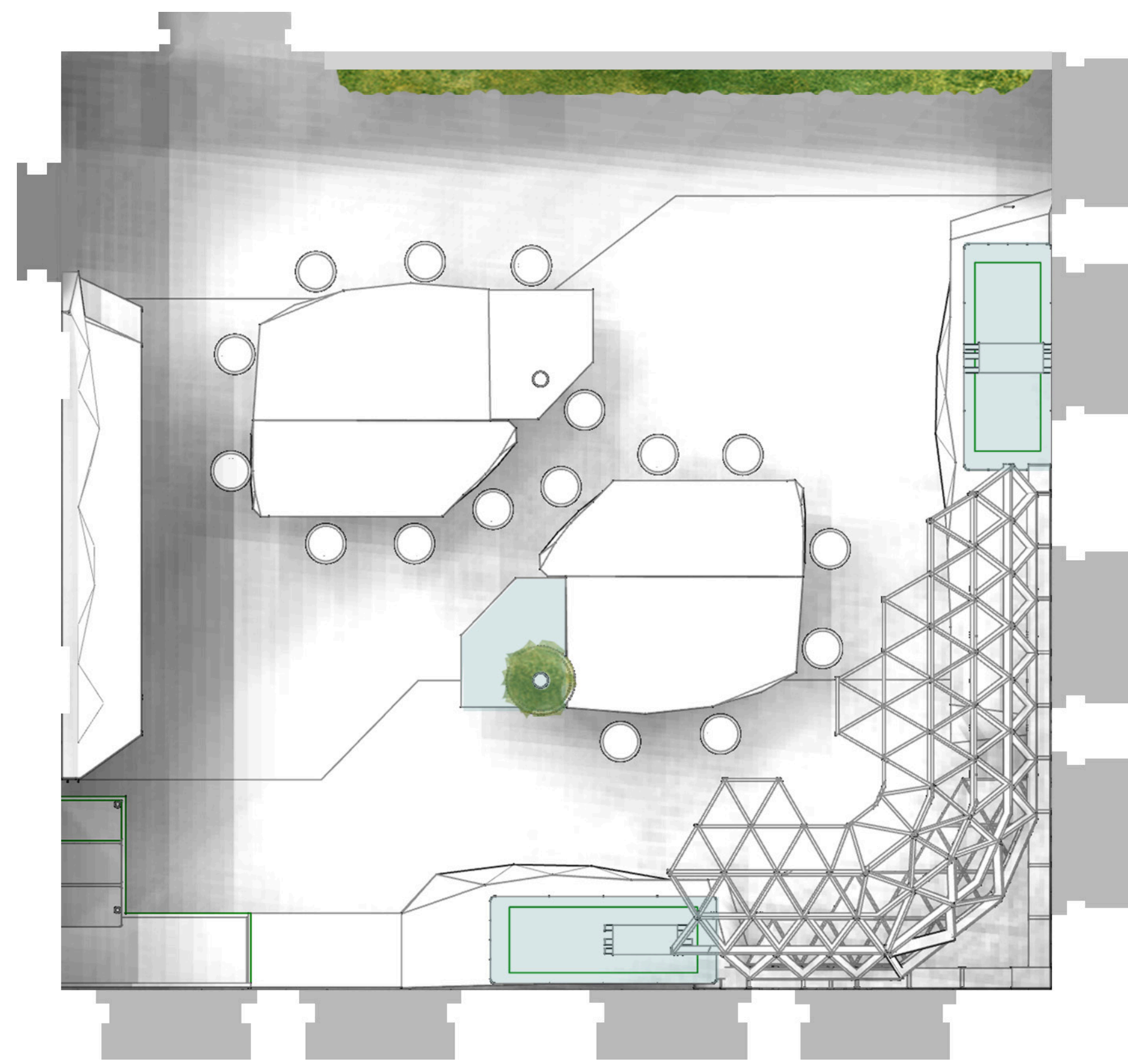
THE MAKERSPACE

*two stationary work desks (with storage) are grounded by the existing columns. Two movable desks can be rearranged to create a configuration for class, individual work, or group work.

AQUAPONICS TANK

*connected with the main studio work table and spirals up onto the existing column, like a vine up a tree trunk. The central location is meant to encourage users to engage.





1. BIOMORPHIC FORMS AND PATTERNS

- *skin--scales, tree bark
- *geometric becomes organic
- *fractals

2. COMPLEXITY AND ORDER

- *the triangle, a geometric shape becomes a complex form
- *through repetition, the complexity forms a sense of order

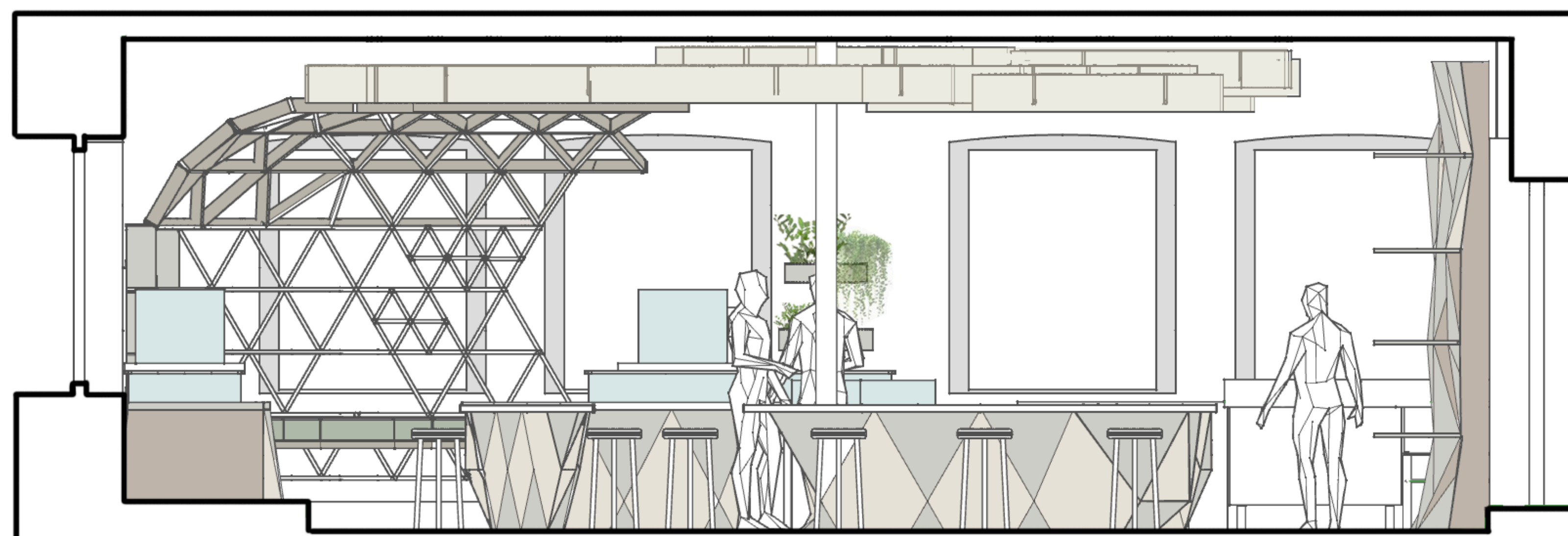
3. PROSPECT AND REFUGE

- *simple topography from floor material and level change
- *space created with an overarching view, and a mezzanine create both the sense of prospect and refuge

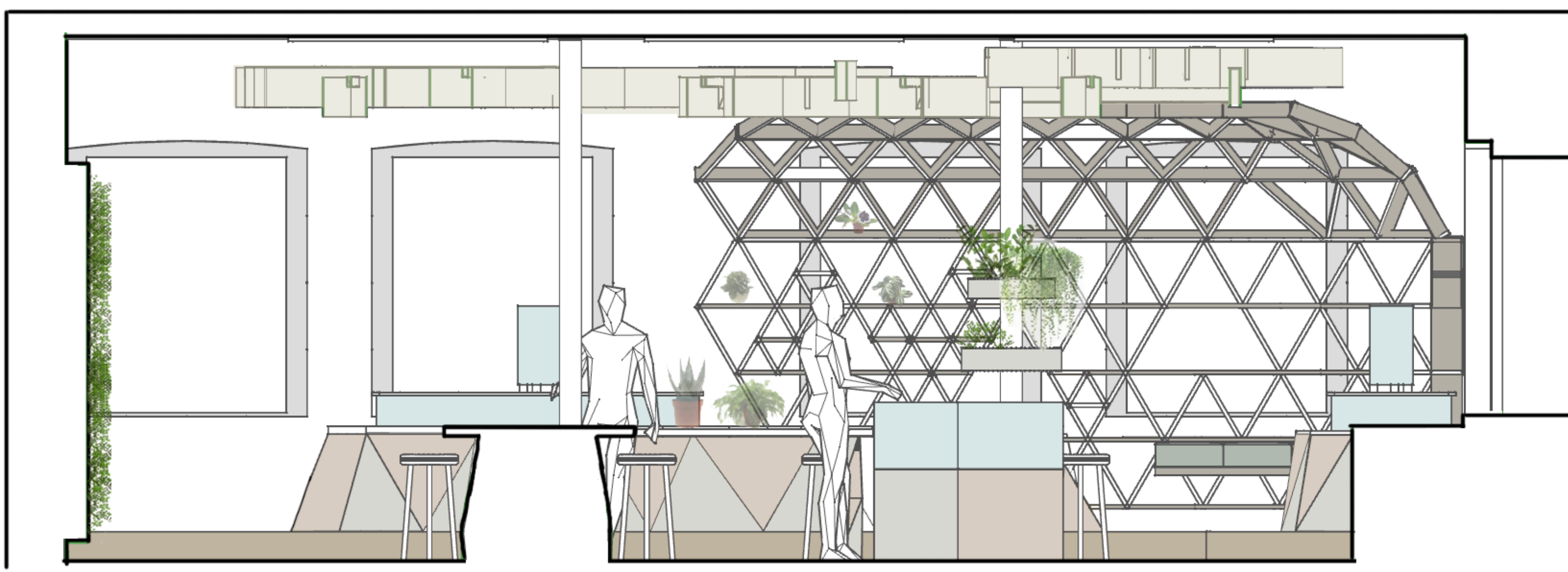
OTHER THEMES:

Curiosity and enticement

Filtered light and shadow



0 1 2 4 8



0 1 2 4 8

